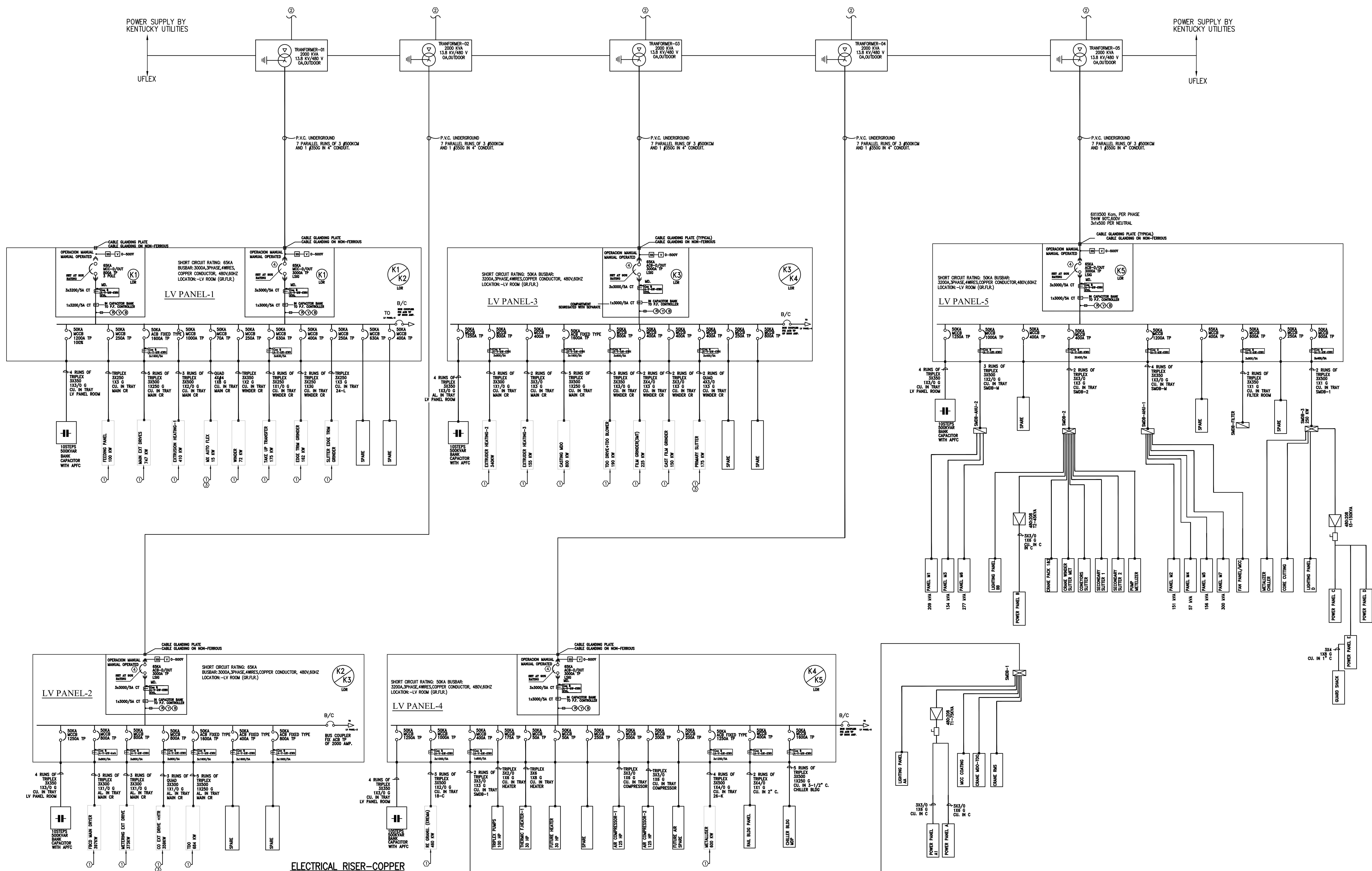


SHEET NOTES:

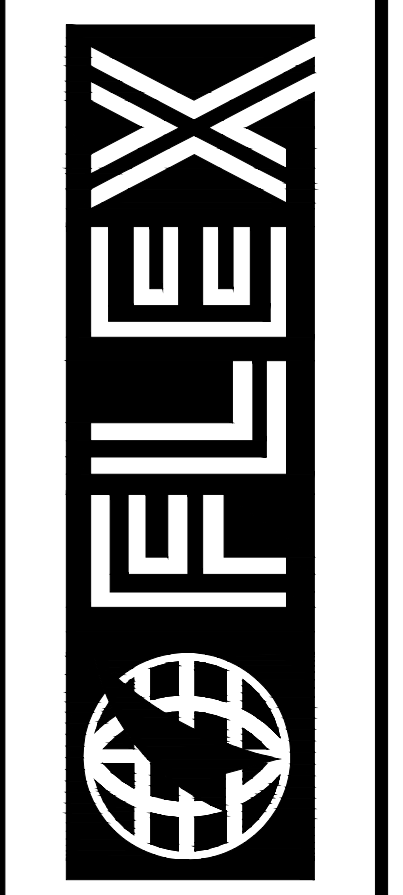
- ① PANEL TO BE PROVIDED BY MACHINE PROVIDER. ELECTRICIAN TO INSTALL MACHINE CABLING ON ALL MACHINE PANELS PER MACHINE DRAWING.
- ② CONTRACTOR TO PROVIDE TRENCH, CONDUIT PER KENTUCKY UTILITIES STANDARD, MIN. DEPTH OF 42". KENTUCKY UTILITIES TO PULL CABLE.
- ③ CIRCUIT REQUIRES A NEUTRAL.
- ④ WIRE #2-20 M.A. 0-480V AND 0-60HZ WIRES FROM EACH INCOMING SERVICE BREAKER TO PANEL CONTROL PANEL # 111 IN MAIN CONTROL ROOM F-12E.



ELECTRICAL RISER-COPPER

ELECTRICAL RISER- COPPER

VALUE ENGINEERING RE-DESIGN DOCUMENT, NOVEMBER 11, 2011



FLEXFILMS, U.S.A., LLC
 1221 NORTH BLACK BRANCH ROAD
 ELIZABETHTOWN, KENTUCKY 42702
 PROJECT L-12 BOPET U.S.A.

DATE	REVISION	BY
NOV. 11, 2011	VALUE ENGINEERING RE-DESIGN DOCUMENT	

PROJECT NO. 8529-02
 DESIGNED BY LIE
 DRAWN BY SHT
 CHECKED BY SHT
 REVIEWED BY TBW
 DATE JULY 2011
 SCALE AS NOTED

mse
 OF KENTUCKY, INC.
 Engineers
 Architects
 Planners
 624 Washington Way
 Lexington, KY 40503
 Phone: (859)223-6584
 Fax: (859)223-2607
 www.mseks.com

DRAWING NO.
**UFL-L12
 E-007**